



Illustrated Parts List for Jet Ex[®] 7
28.5VDC Generator Set



Series 500075

Chapter 1: Illustrated Parts List

Section 1-1: Introduction

The illustrated parts list identifies, describes, and illustrates main assemblies, subassemblies, and detail parts of the 500284 series generator set manufactured by ITW GSE, Palmetto, Florida, USA.

The purpose of this list is to provide parts identification and descriptive information to service and maintenance personnel for procuring spare parts.

This illustrated parts list chapter contains the following sections:

- Section 1 – Introduction (this section): Information about the parts lists located in Section 3 of this chapter.
- Section 2 – Numerical Index: A list of all parts, in order by part number, with references to the figures in Section 3 in which they appear.
- Section 3 – Parts List: Diagrams on the left-hand pages that show the location of parts and charts on the opposite (right-hand) pages that list the part number, description, and other information, as explained below Which Parts Are Included.

1) Which Parts Are Included

The parts lists include field-replaceable parts. These parts lists do not include the following items:

- Standard hardware items such as nuts, screws, washers, and other fasteners that are available commercially
 - Bulk items such as wire, cable, sleeving, tubing, etc., which are commercially available
- Permanently attached parts, which lose their identity by being welded, soldered, riveted, etc., to other parts, weldments, or assemblies.

2) Explanation of the Parts List Columns

The chart below shows an example of the parts list forms. The form has six standard columns.

FIGURE ITEM NO.	PART NO.	DESCRIPTION	EFF	QTY.
9 -	1 281881-001	Battery (BT401)		1
	2 287796	Battery Hold Down		1
	3 494295	Battery Hold Down Bolt		1
	4 291903	Cable, Battery, Negative		1
	5 291883	Cable, Battery, Positive to Switch		1

Sample Parts List

The **figure number**, shown in the first column on the left, shows the number of the illustration that identifies the parts. An asterisk (*) in this column indicates that the item is not shown on the diagram.

The **item number** column shows the number of the part called out in the diagram. Parts that are subassemblies of numbered parts are generally not identified on the diagram and not given an item number. The numerical index (Chapter 4, Section 2) combines the figure and item numbers to assist the user in finding the illustration of a part when the part number is known. For example, "1-3" refers to the part for Figure 1, Item 3.

All part numbers appearing in the **ITW GSE Part No.** column are ITW GSE part numbers. ITW GSE part numbers are generally either six digits or six digits with three dash numbers. Items that do not have part numbers are reference assemblies rather than physical parts.

The **Description** column contains the identifying names for the parts. An indentation of the part name (starting with three dots ...) indicates that the part is a component of the non-indented assembly listed above it.

The **EFF** (effective) column indicates the applicability of parts to different models of equipment. When more than one model of equipment is covered by a parts list, some parts are used on only one model. The EFF column uses a code letter A, B, etc., to identify the model the part is used on. If there is no letter code in the EFF column, that part is used on all models.

The **Qty.** column indicates the quantity of parts required for an assembly or subassembly in which the part appears. This column does not necessarily reflect the total used in the complete end item. "Ref." in this column indicates that the item is a reference assembly and not a single replaceable part.

The following table shows the four basic specifications of this unit.

EFF Code	Part & Dash Number	Mounting	Generator Meters	28.5 V DC Output	Fuel Tank
A	DCE600CU1500T4I	Trailer	Analog	Yes	Composite

Numerical Index

The purpose of this index is to assist the user in finding the illustration and description of a part when the part number is known. Part numbers are arranged in alphanumerical sequence.

FIGURE – ITEM NO.	ITW GSE PART NO.
-------------------	------------------

12-	040201
12-	040213
10-	056534
7-	056535
13-7	16DA2162
15-18	16DA3493
15-27	180068
14-3	180593-003
15-15	180600
17-6	180776
14-6	181022C-005
14-9	181022C-005
10-2	281423
17-10	281688
9-1	281881-001
15-14	282239
2-12	282554-003
1-4	282562
7-1	282562
2-15	282658
18-41	282720
6-7	282918
6-6	282919
15-7	283063
5-8	283597
5-7	283824
7-	284203

FIGURE – ITEM NO.	ITW GSE PART NO.
-------------------	------------------

3-	284372-002
9-18	285062-001
1-	285125
15-16	285647
18-27	285844
18-17	285850
18-16	285851
18-3	285911
19-1	285911
19-3	285915-001
19-7	285915-002
19-5	285915-003
19-6	285915-004
19-4	285915-005
19-2	285915-006
18-	285917
18-42	286201
18-4	286205
18-22	286205
12-1	286388-001
12-	286477-002
12-10	286485-001
13-	286607-001
14-7	286611
13-2	286699-001
18-23	286734
18-18	286735

FIGURE – ITEM NO.	ITW GSE PART NO.
-------------------	------------------

18-19	286735-001
18-20	286735-002
18-21	286735-003
18-24	286735-004
18-25	286735-005
18-26	286735-006
16-6	286810-001
15-8	286813
16-5	286849
9-11	286850
9-16	286850
15-13	286884
15-2	286887
7-	286897-012
11-6	286897-037
7-8	286897-038
18-29	286978
18-34	286981
18-30	286982
18-	286984
18-	286985
15-3	287184-003
17-8	287401
11-5	287419
2-17	287459
2-16	287460
2-1	287461
2-4	287462
2-8	287463
2-29	287464
2-13	287465
2-21	287466
5-9	287526-002

FIGURE – ITEM NO.	ITW GSE PART NO.
-------------------	------------------

5-10	287542-001
5-	287542-002
17-1	287564
2-10	287565
18-2	287587
18-6	287626
18-7	287626-001
18-8	287626-002
18-9	287626-003
18-11	287626-004
18-12	287626-005
18-13	287626-006
18-5	287627
18-10	287628
7-6	287639
2-18	287696
1-14	287698-001
9-8	287735
5-	287785
9-2	287796
13-5	287908
1-	287950
4-	287950
4-8	287955
17-18	287956
4-11	287972
5-6	287977
5-5	287978
5-2	287981
4-5	287984
3-6	287986
4-7	287986
18-40	287993

324 South Service Road, Unit 104 Melville NY 11747

TEL (631) 815-5520 • FAX (631) 815-5526

E-mail: sales@aviationgroundequip.com

Web: www.aviationgroundequip.com

FIGURE – ITEM NO.	ITW GSE PART NO.
-------------------	------------------

18-39	287994
18-38	287996
4-12	287998
5-3	287999
17-9	288003
15-9	288008
15-28	288015
14-	288019-004
1-	288020
12-9	288020
1-2	288021
1-	288022
1-1	288023
8-4	288052-002
6-5	288057-001
8-6	288059-001
1-5	288060-001
8-9	288060-001
5-	288064-001
5-	288064-002
5-	288064-003
4-	288064-004
4-	288064-004
5-	288064-005
7-9	288215-001
7-10	288221-002
7-	288224
1-	288300
2-20	288300
3-13	288306
1-12	288340
4-	288340
18-	288340

FIGURE – ITEM NO.	ITW GSE PART NO.
-------------------	------------------

5-4	288352
7-	288358
7-	288358
8-7	288374
8-5	288376-001
15-19	288380-001
7-	288383
7-	288384
2-11	288388
18-1	288389
18-14	288390
18-37	288391
18-15	288392
18-28	288393
18-31	288394
18-32	288395
18-35	288396
18-36	288397
18-33	288398
12-7	288836-001
12-6	288836-002
2-14	288862
2-22	288866
3-11	288985
17-	288985
12-8	288999-001
4-1	289080
4-10	289081
5-1	289086
12-5	289092
12-	289104-001
1-13	289210-004
1-14	289208-005

324 South Service Road, Unit 104 Melville NY 11747

TEL (631) 815-5520 • FAX (631) 815-5526

E-mail: sales@aviationgroundequip.com

Web: www.aviationgroundequip.com

FIGURE – ITEM NO.	ITW GSE PART NO.
-------------------	------------------

10-	289200-001
10-	289200-003
1-	289200-004
2-19	289842-001
7-	289940
6-8	290597-001
17-3	290646
2-6	290836
14-11	290927
12-4	290931
6-4	290936
14-10	290948
13-14	290957
14-4	290958
13-18	290981
10-6	291097
12-3	291307
15-29	291358
12-2	291431
3-5	291611
9-6	291611
2-3	291708
3-	291766
4-4	291767
10-3	291771
10-4	291778
10-7	291781
10-5	291828
6-3	291832
8-3	291839
3-4	291855
7-11	291867
8-8	291868

FIGURE – ITEM NO.	ITW GSE PART NO.
-------------------	------------------

7-	291872
7-	291873
3-7	291874
7-	291874
10-8	291875
14-1	291876
3-14	291877
6-1	291877
6-	291878
6-	291879
6-2	291880
9-5	291883
9-7	291889
4-3	291890
3-8	291893
9-15	291895
9-10	291899
14-8	291901
9-4	291903
8-1	291917
12-	291937
4-2	291939
15-	291996
9-14	291997
7-2	291998
13-11	30GH1119
2-9	400435
16-2	400435
13-	400613-003
13-	400613-004
13-8	400641-011
13-9	400642-003
2-28	401842

324 South Service Road, Unit 104 Melville NY 11747

TEL (631) 815-5520 • FAX (631) 815-5526

E-mail: sales@aviationgroundequip.com

Web: www.aviationgroundequip.com

FIGURE – ITEM NO.	ITW GSE PART NO.
-------------------	------------------

15-20	401911-005
15-17	402037-004
17-16	402530
17-15	402531
13-	402663
17-13	402788
17-	402789-004
10-	402927-003
2-7	402987
1-11	403091-008
13-10	403189
13-17	403189
10-11	403782-002
11-1	403809-002
7-	404030-002
14-2	404065-002
8-2	404154-013
13-	404172-001
13-	404172-002
13-	404172-003
13-	404173
15-4	405278-006
2-5	407366
9-13	407948
14-5	407948
14-13	407948
14-	408352
13-4	408596-001
2-	408665-001
2-	408665-002
17-11	408999-001
17-7	488555-001
17-4	488557-008

FIGURE – ITEM NO.	ITW GSE PART NO.
-------------------	------------------

17-14	488562
17-12	488628
1-8	488640
17-5	489135
9-12	489658-007
9-17	489658-007
16-8	489658-010
1-	489689
13-3	494134-001
9-3	494295
15-23	494681-001
2-2	76B1148
1-10	77A1157
2-25	78A1000
13-1	78A1117-002
13-6	78A1120-001
11-2	78B1118-002
14-	78B1138
2-26	79A1110
1-	79A1127-002
14-12	79B1140
1-9	7J422-000
7-	80A1117
2-27	81B1084
1-13	83A1103
14-	84A1075
17-	85C1004-002
15-5	A25
16-3	A25
15-10	AW626
16-4	AW626
13-12	HF2518-005
13-13	HF2518-008

324 South Service Road, Unit 104 Melville NY 11747

TEL (631) 815-5520 • FAX (631) 815-5526

E-mail: sales@aviationgroundequip.com

Web: www.aviationgroundequip.com

FIGURE – ITEM NO.**ITW GSE PART NO.**

13-15	HF2518-008
13-16	HF2518-008
14-	W10051-014
17-17	W10072-063
11-4	W10750-004
15-1	W10869-006
7-	W10869-014
10-	W10869-014
11-3	W10910-000
15-24	W10931-003
15-25	W10933-003
15-11	W11097-007

FIGURE – ITEM NO.**ITW GSE PART NO.**

15-26	W11097-007
15-12	W11097-022
15-21	W11114-012
14-	W11166-003
15-6	W11242-018
12-	W11254-003
17-	W11254-005
15-22	W11280-015
10-	W7814-000
16-1	W9218-227
16-7	W9218-251
9-9	W9407-446

324 South Service Road, Unit 104 Melville NY 11747

TEL (631) 815-5520 • FAX (631) 815-5526

E-mail: sales@aviationgroundequip.com

Web: www.aviationgroundequip.com

Section 1-2: Illustrated Parts List

This section contains the following illustrations:

Figure 1: Exterior Components	2
Figure 2: Labels and Reflectors	
Figure 3: Interior Component	6
Figure 4: Mounting Frame Components	8
Figure 5: Canopy Assembly	10
Figure 6: Air Intake System Components	12
Figure 7: Fuel System Components	14
Figure 8 Exhaust System Components	16
Figure 9 Engine Electrical Components.....	18
Figure 10: Cooling System Components	20
Figure 11: Lubrication System Components.....	22
Figure 12: Control Box Mechanical Components	24
Figure 13: Control Box Controls and Indicators	26
Figure 14: Control Box Interior Components	28
Figure 15: Rectifier Components	30
Figure 16: Contactor Components	32
Figure 17: Generator Assembly	34
Figure 18: Trailer Components	36

Parts having an asterisk (*) in the first column of the parts list are not shown in the illustration.

For more information about this section, refer to Section 4-1. For information about abbreviations used in this manual, refer to the Introduction.



Figure 1: Exterior Components

FIGURE – ITEM NO.	ITW GSE PART NO.	DESCRIPTION	EFF	QTY.
1 -	1	288023		2
		288020		2
*	2	288021		1
		288022		1
	3	Control Box (see Figures 12, 13 ,and 14)		Ref.
	4	282562		1
		79A1127-002		1
	5	288060-001		1
	6	Canopy Assembly (see Figure 5)		Ref.
	7	DC Output Cable (specified by user)		1
	8	488640		1
	9	7J422-000		1
	10	77A1157		1
		285125		1
		288300		1
*	11	403091-008		1
*	12	287698-001		1
	13	289210-004		1
	14	289208-005		1

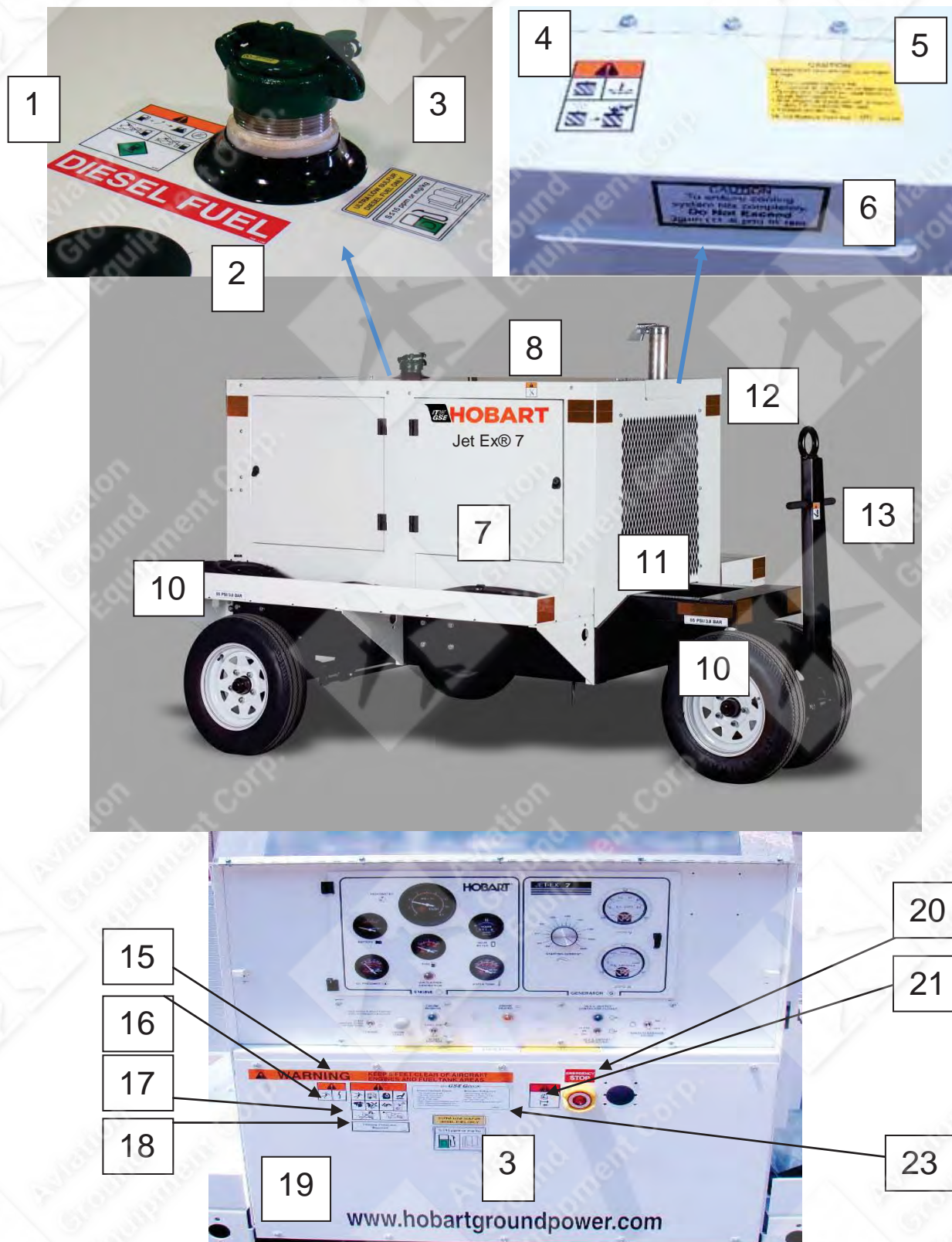
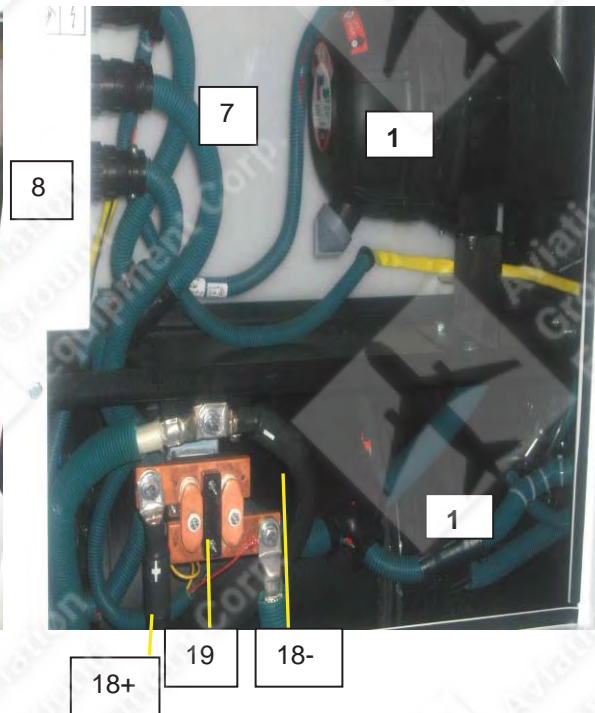
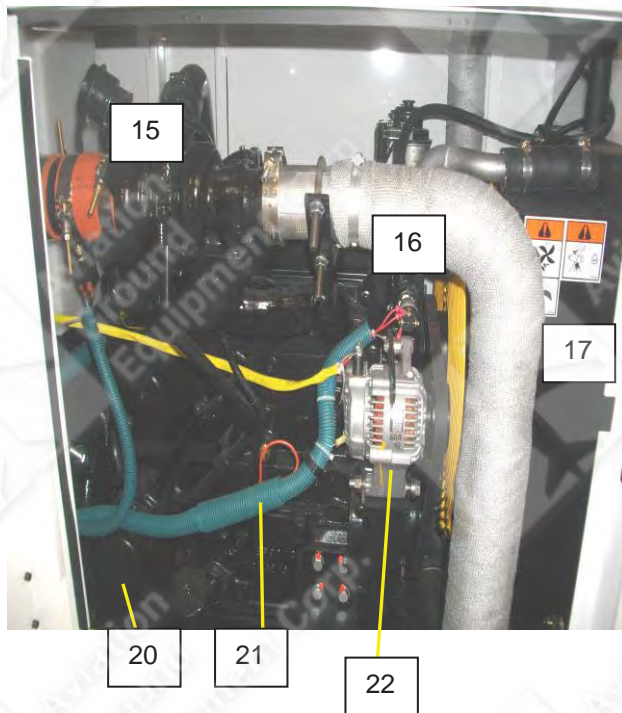
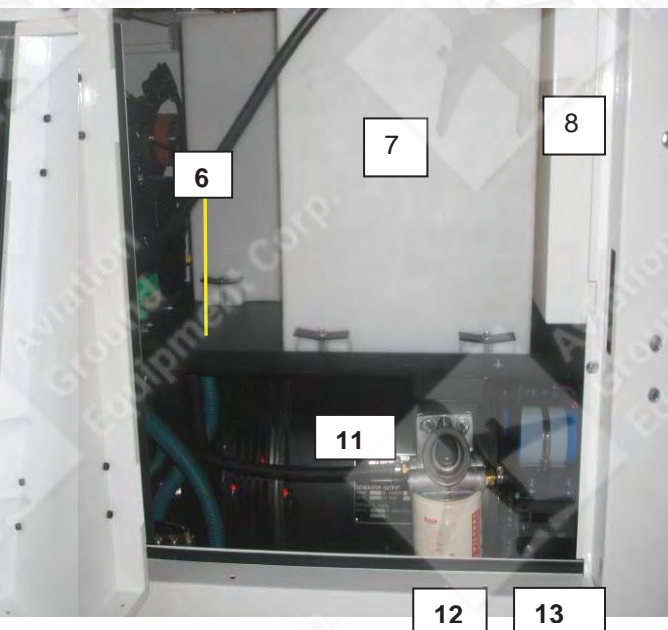
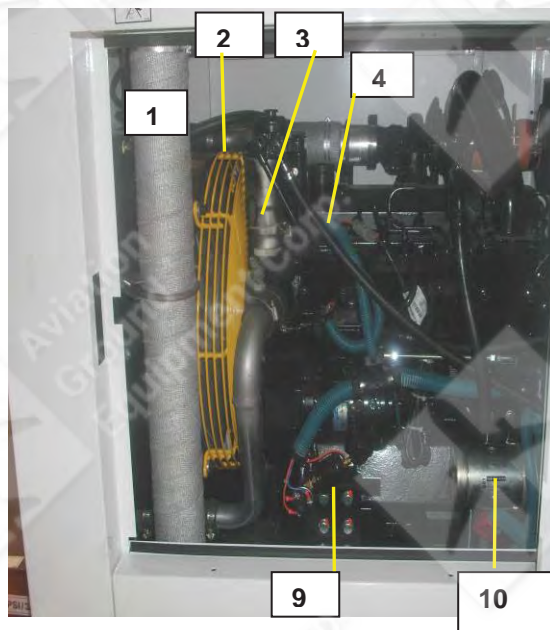


FIGURE – ITEM NO.	ITW GSE PART NO.	DESCRIPTION	EFF	QTY.
2 -	1	287461	Label, Fuel Warning	1
	2	76B1148	Label, Diesel Fuel	1
	3	291708	Label, Ultra Low Sulfur Diesel	2
	4	287462	Label, Engine Coolant	1
	5	407366	Label, Caution – Insufficient Cooling	1
	6	290836	Label, Radiator Fill Rate	1
	7	402987	ITW GSE Nameplate	2
	8	287463	Label, Hot Muffler	2
	9	400435	Label, 28 V	1
	10	287565	Label, Tire Pressure	4
	11	288388	Label, Not A Step	2
	12	282554-003	Reflector Kit	Ref
		408665-001	...Reflector, Rectangular, Red	8
		408665-001	...Reflector, Rectangular, Red	4
		408665-002	...Reflector, Rectangular, Amber	24
		408665-002	...Reflector, Rectangular, Amber	12
	13	287465	Label, Falling Objects (tow bar)	2
	14	288862	Label, Caution, Engine Speed	1
	15	282658	Label, Clearance	1
	16	287460	Label, Danger, High Voltage	3
	17	287459	Label, Dangers, General Identification	1
	18	287696	Label, Hearing Protection	1
	19	289842-001	Label, www.itwgse.com	1
	20	288300	Label, Emergency Stop	1
	21	287466	Label, Emergency Stop	1
	22	288866	Label, Support Center	1
*	25	78A1000	Label, ID.	1
*	26	79A1110	Label, Option	1
*	27	81B1084	Label, 28.5 Volts	1
*	28	401842	Tag, Attention – Engine Coolant	1
*	29	287464	Label, Moving Parts	2



Right Side, Front to Rear



Left Side, Front to Rear

Figure 2: Interior Components

FIGURE – ITEM NO.	ITW GSE PART NO.	DESCRIPTION	EFF	QTY.
3 -	1	Exhaust Pipe (see Exhaust Components, Figure 8)		1
	2	Engine Fan (see Cooling Components, Figure 10)		1
	3	Fuel-Water Separator – Cummins (see Fuel, Figure 7)		Ref.
	4	291855 Engine, Cummins, 4BT3.3-G5		1
*	291766	Bracket, Engine Support		2
*	24656	Engine Isolator, 600 lb max load		2
*	5	291611 Switch, Battery Disconnect (see Electrical, Figure 9)		1
	6	287986 Support, Control Panel (see Mounting Frame, Figure 4)		1
	7	282299 Fuel Tank (see Fuel Components, Figure 7)		1
	8	291893 Control Box (see Figures 12, 13, and 14)		1
	9	Oil Pressure Switch and Sender (see Lubrication, Figure 11)		
	10	Starter		Ref.
	11	288985 Generator, JetEx		1
	12	Pre-Filter (see Fuel, Figure 7)		1
*	24656	Isolator, 600 lb max load		1
	13	288306 Rectifier Assembly (see Rectifier Components, Figure 15)		1
	14	291877 Air Cleaner (see Air Intake System Components, Figure 6)		1
	15	Turbocharger		Ref.
	16	Turbo Exhaust Pipe (see Exhaust Components, Figure 8)		1
	17	Radiator (see Cooling System Components, Figure 10)		1
	18	DC Output Cable (customer option)		1
	19	Output Contactor (see Contactor Components, Figure 16)		1
	20	Oil Filter (see Lubrication System Components, Figure 11)		Ref.
	21	Engine Temperature Sensor (for glow plugs, see Figure 9)		Ref.
	22	Alternator		Ref.

In this figure, “Ref.” indicates components included with the engine.

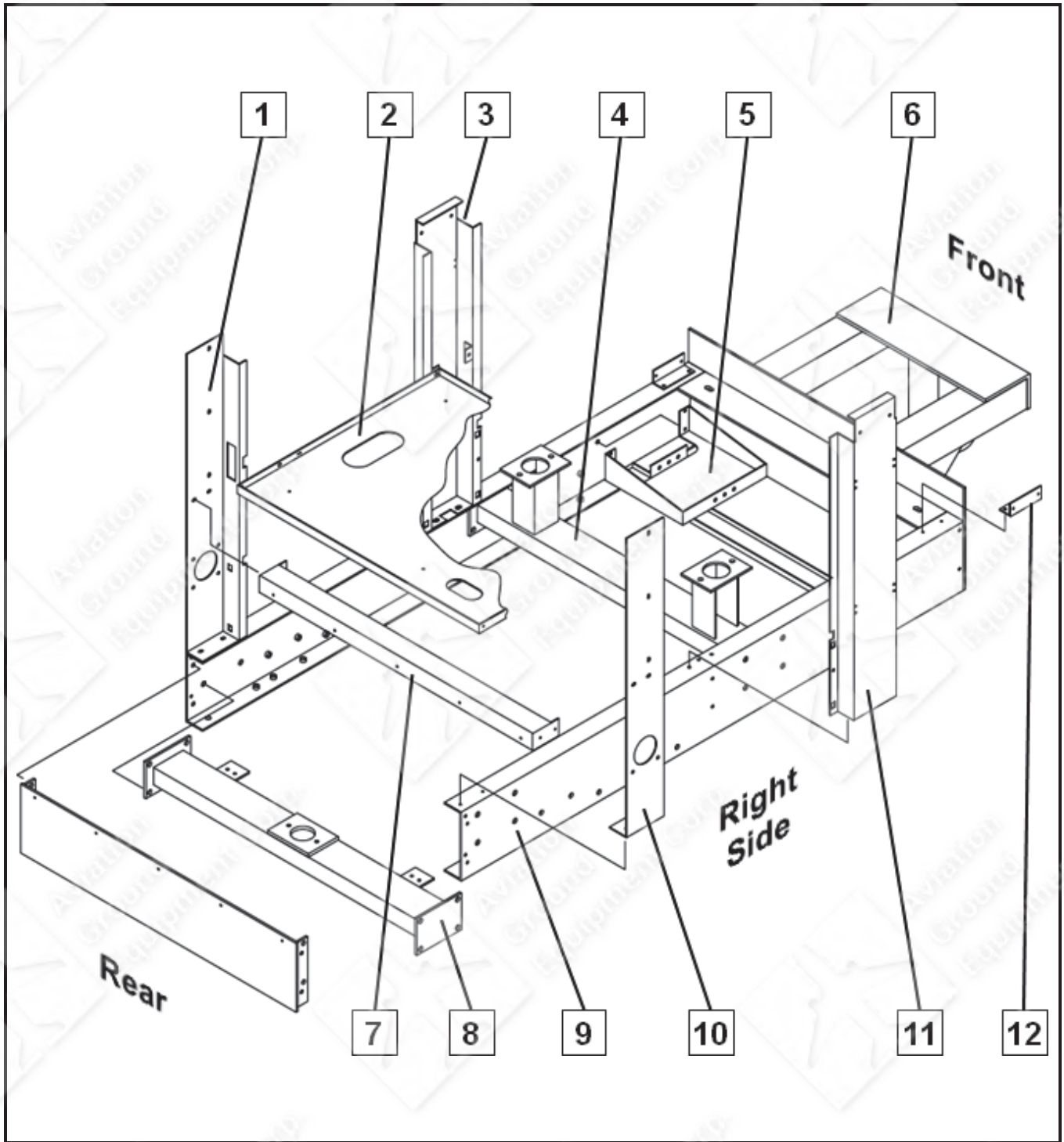


Figure 3: Mounting Frame Components

FIGURE – ITEM NO.	ITW GSE PART NO.	DESCRIPTION	EFF	QTY.
4 -	1 289080	Left Control Panel Support		1
	2 291939	Support, Fuel Tank		1
	3 291890	Door Support Panel with Disconnect Switch		1
	4 292065	Engine Support		1
	5 287984	Battery Tray		1
	7 287986	Control Panel Support		1
	8 292064	Generator Support		1
	9	Mounting Frame Options		Ref.
	287950	Stationary Mounting Frame		1
	288340	Trailer Assembly		1
10	289081	Control Panel Support, Right		1
11	287972	Door Support Panel		1
12	287998	Front Panel Bracket		2
13	292075	Battery Cover (not illustrated)		
14	288388	Label "Not a Step" (not illustrated)		

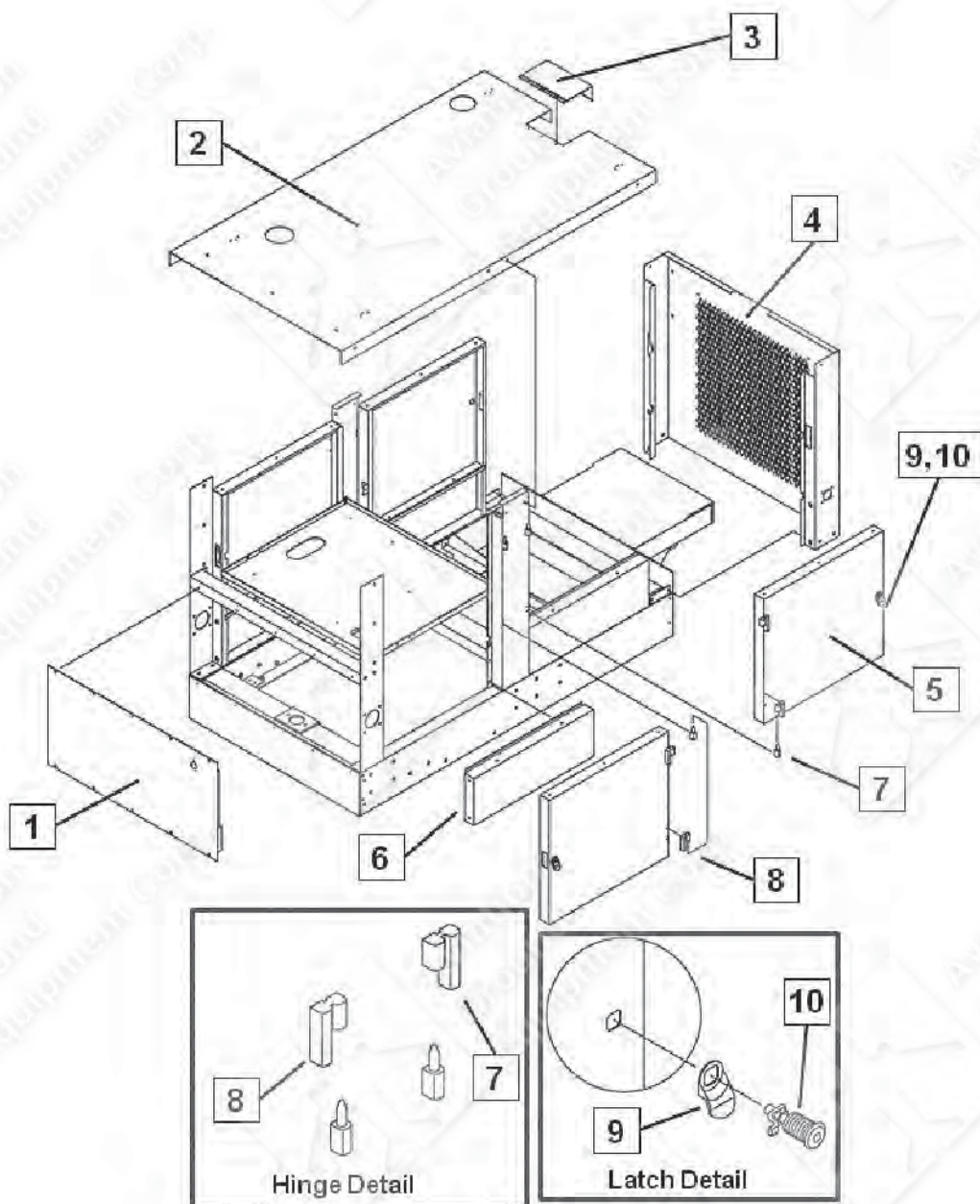


Figure 4: Canopy Assembly

FIGURE – ITEM NO.	ITW GSE PART NO.	DESCRIPTION	EFF	QTY.
5 -	1 289086	Lower Rear Panel		1
	2 291941-002	Canopy, top fuel tank, I-shaped		1
	3 287999	Radiator Cap Access Door		1
	4 288352	Front Panel		1
	5 287978	Access Door		4
	6 287977	Side Panel		4
*	287785	...Panel Fastener		16
	7 283824	Right Hand Hinge		4
	8 283597	Left Hand Hinge		4
	9 287526-002	Door Latch Pull		4
	10 287542-001	Door Latch – Hex		4
	287542-002	Door Latch – T-Handle		4

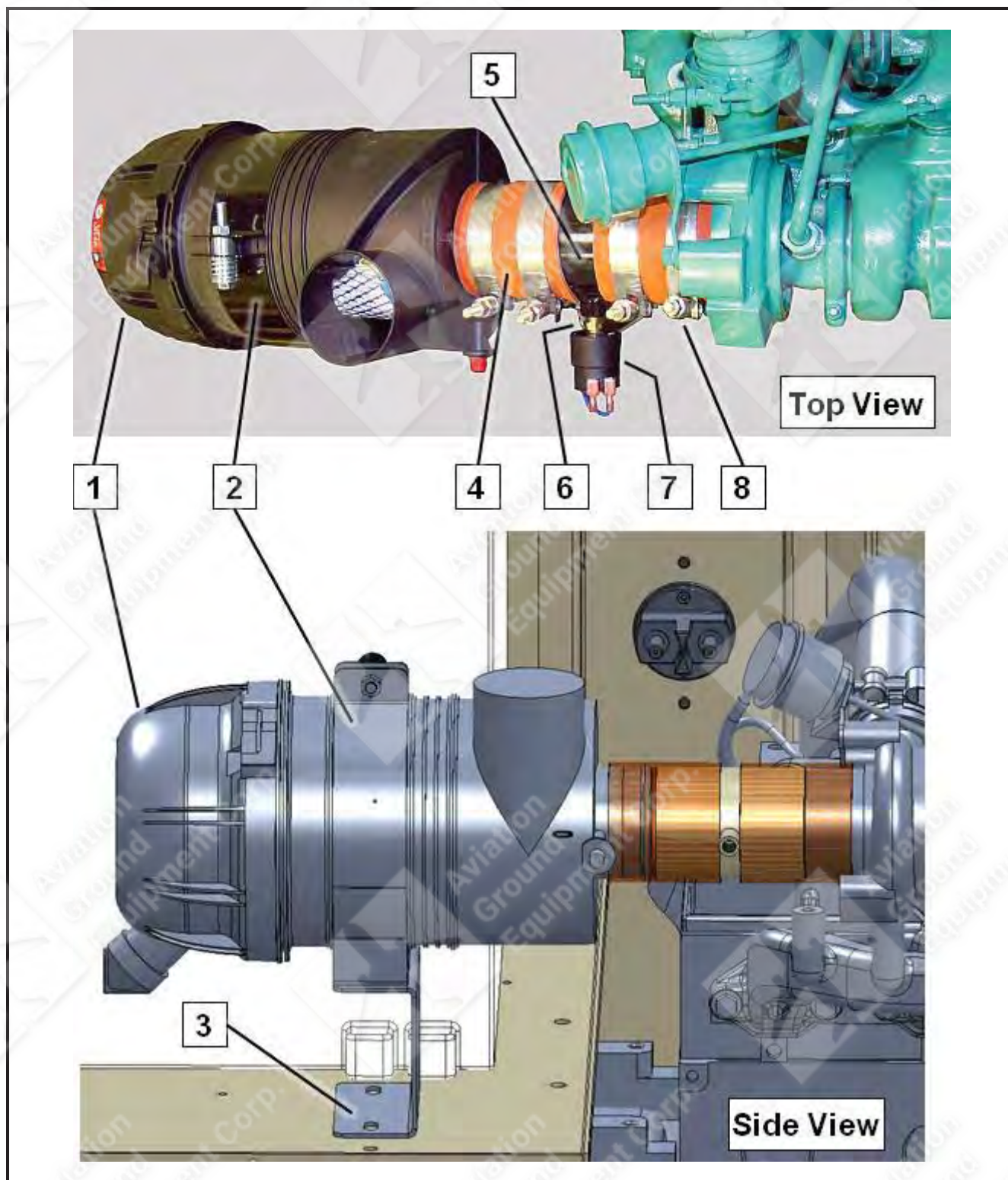


Figure 5: Air Intake System Components

FIGURE – ITEM NO.	PART NO.	DESCRIPTION	EFF	QTY.
6 -	1 291877	Air Cleaner		1
*	291878	...Filter Element – Primary		Ref.
*	291879	...Filter Element – Secondary		Ref.
	2 291880	Bracket, Air Filter		Ref.
	3 291832	Bracket, Air Filter Mounting		1
	4 290936	Hose, CAC, Straight, 3" ID		2
	5 288057-001	Tube, Air Cleaner		1
	6 282919	Adapter, Indicator		1
	7 282918	Sensor, Air Restriction (A404)		1
	8 290597-001	Clamp, Floating Bridge, 3.25"		4

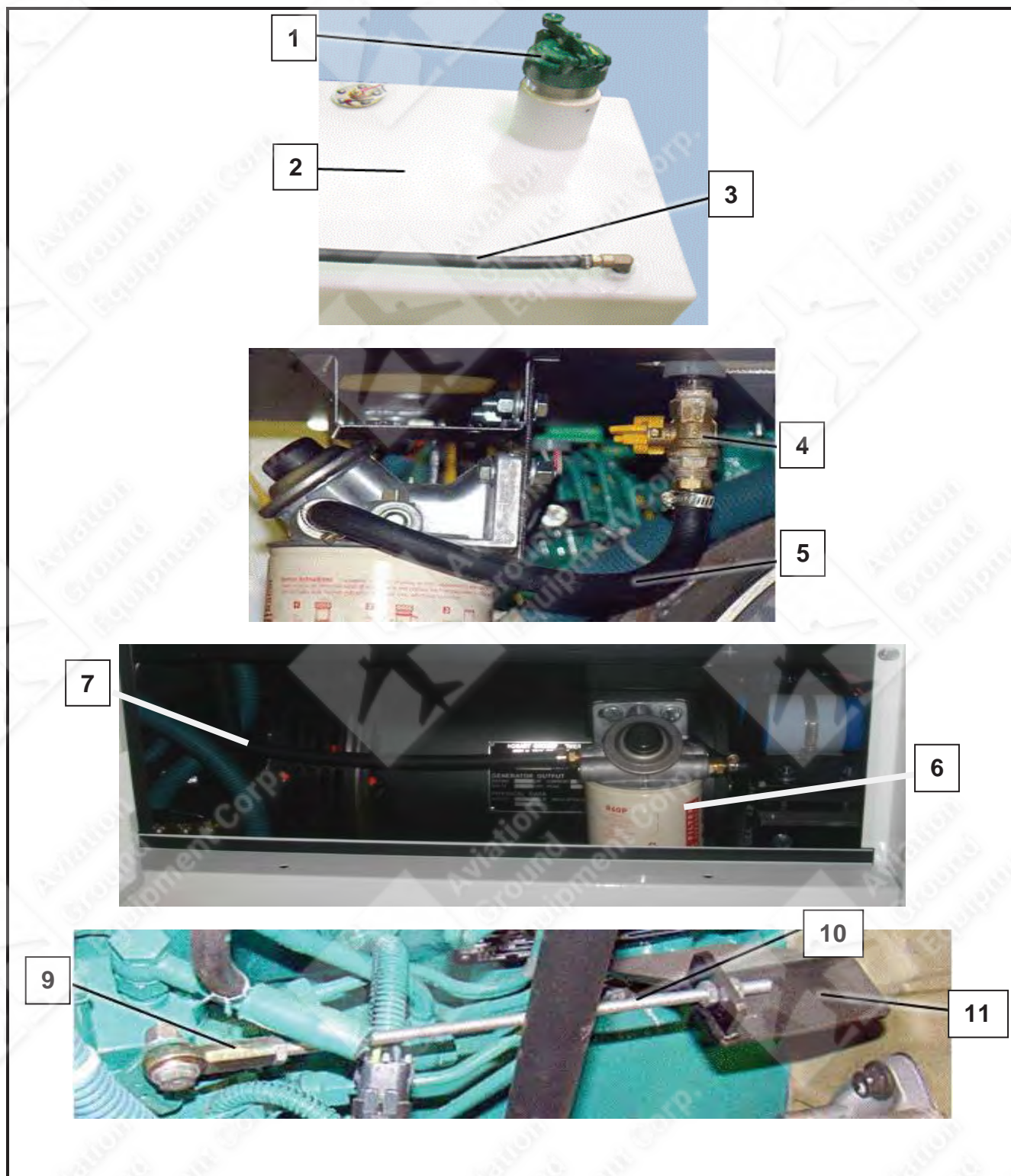


Figure 6: Fuel System Components

FIGURE – ITEM NO.	PART NO.	DESCRIPTION	EFF	QTY.
7 -	1 282562	Cap, Fuel Fill, Diesel Green		1
	2 291998	Fuel tank Assembly		1
	291874	...Fuel Tank		1
	404030-002	...Sender Assembly, Fuel Level (R408)		1
	* 284203	Mounting Plate, Fuel Tank		4
3		Line, Fuel Return		Ref.
	288358	...Fitting, Straight, Fuel Line, 3/8 Barb to 3/8 NPT		1
	288224	...Fitting, Fuel Return, Straight		1
	056535	...Hose, 3/8" ID		35"
	* 289940	...Valve, Check (Microcheck)		1
4		Fuel Shut-Off Valve Components		Ref.
	288384	...Nipple, 3/8" – 1 1/2"		1
	288383	...Valve, Fuel Shut-Off		1
	288358	...Fitting, Straight, Fuel Line, 3/8 Barb to 3/8 NPT		1
5		Fuel Line (Tank to Pre-Filter)		Ref.
	056535	Hose, 3/8" ID		16"
	W10869-014	Clamp, Hose		2
6	287639	Pre-Filter: Fuel-Water Separator (Racor 460R30)		1
	286897-012	...replacement element (Racor R60P)		Ref.
	291873	Bracket, Pre-Filter		1
7	056535	Hose, 3/8" ID		6"
		Fuel Line Fuel-Water Separator to filter		1
	W10869-014	Clamp, Hose		2
	291872	Bracket, Fuel Strainer		1
	80A1117	Clamp, Mtg. Flex Hose		1
8	288215-001	Bearing, Rod Ends (Fuel Pump Throttle) (not illustrated)		1
9	288221-002	Rod, Threaded, 5/16-24 x 8.5" Lg.		1
10	291867	Bracket, Fuel Pump Arm Rod		1

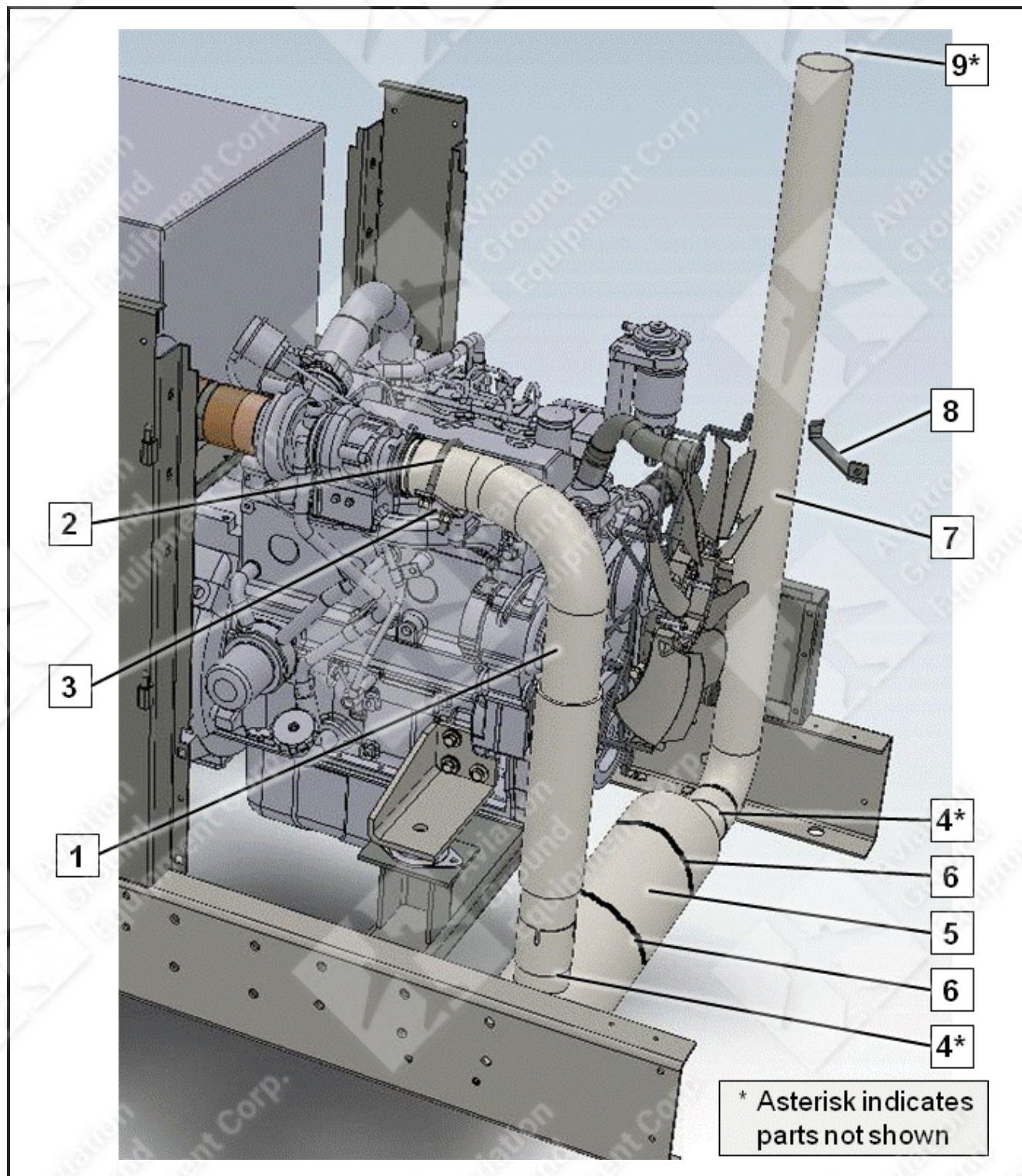


Figure 7 Exhaust System Components

FIGURE – ITEM NO.	PART NO.	DESCRIPTION	EFF	QTY.
8 -	1 291917	Pipe, Turbo Exhaust Assembly		1
	2 404154-013	Clamp, Full Circle, 3" Diameter		1
	3 291839	Bracket, Support, Exhaust Pipe		1
	* 4 288052-002	Clamp, Accuseal, 3.00 (on pipes)		2
	5 288376-001	Muffler Assembly		1
	6 288059-001	Clamp, Hose, Stainless Steel (holds muffler)		2
	7 288374	Pipe, Exhaust Assembly		1
	8 291868	Bracket, Exhaust Pipe		2
	* 9 288060-001	Cap, Rain, Exhaust Pipe		1

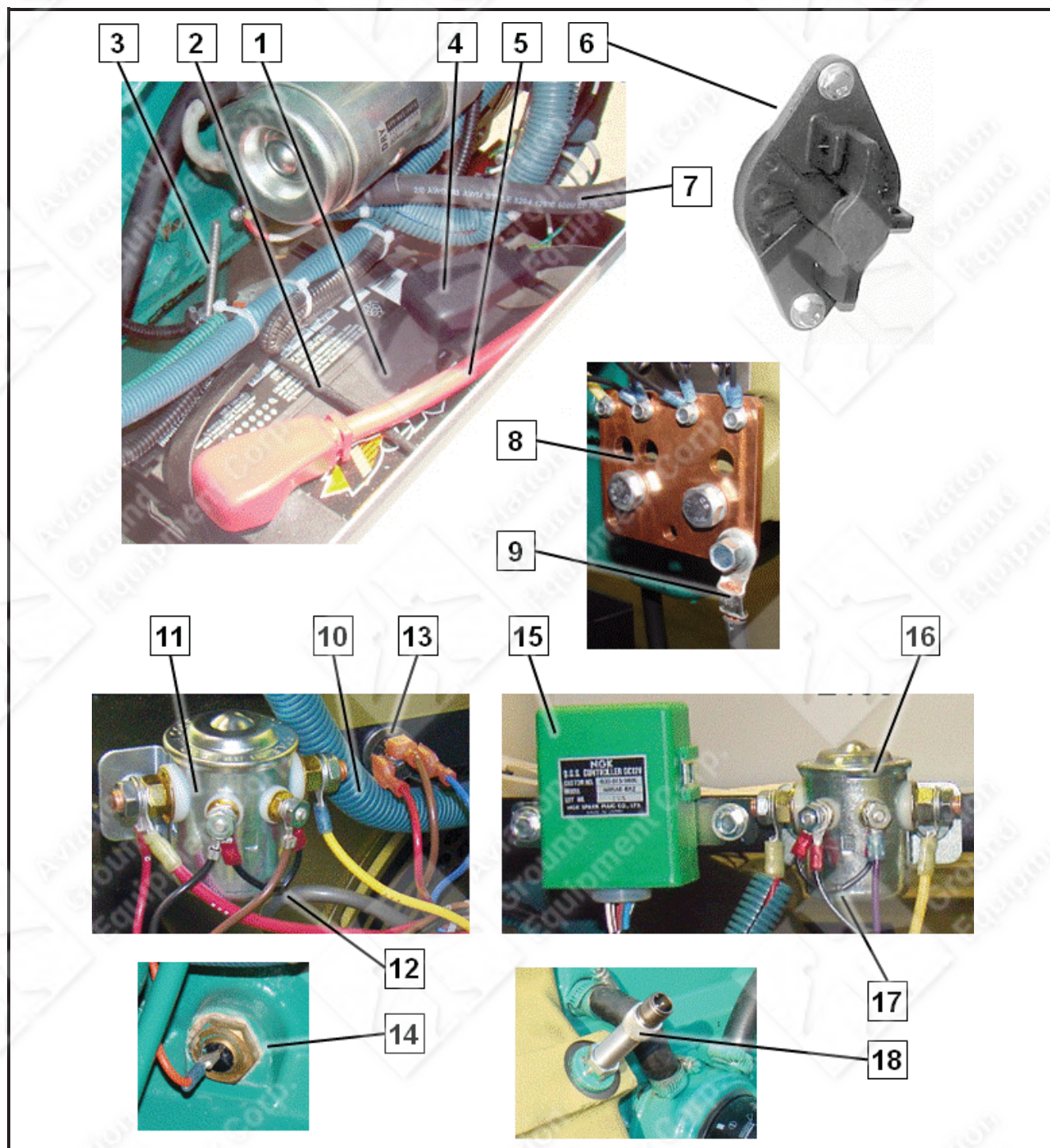


Figure 8 Engine Electrical Components

FIGURE – ITEM NO.	PART NO.	DESCRIPTION	EFF	QTY.
9 -	1 281881-001	Battery (BT401)		1
	2 287796	Battery Hold Down		1
	3 494295	Battery Hold Down Bolt		1
	4 291903	Cable, Battery, Negative		1
	5 291883	Cable, Battery, Positive to Switch		1
	6 291611	Switch, Battery Disconnect, 2000A, Lock Out (S416)		1
	7 291889	Cable, Disconnect Switch to Starter		1
	8 287735	Ground Plate (GP1)		1
	9 W9407-446	Cable, Ground Plate to Frame		1
	10 291899	Engine Wire Harness		1
	11 286850	Solenoid, Starter Cut-Out (L402)		1
	12 489658-007	Fly back Diode		1
	13 407948	Diode Assembly, Blocking (CR402)		1
	14 291997	Sensor, Engine Block Temperature (A406); USE SR11155		Ref.
	15 291895	Controller, Glow Plug (A407)		Ref.
	16 286850	Solenoid, Glow Plug (L403)		1
	17 489658-007	Fly back Diode		1
	18 285062-001	Magnetic Pickup (A403)		1
<p>Water Temp. Switch & Sender – see Figure 10</p> <p>Oil Pressure Switch & Sender – see Figure 11</p>				

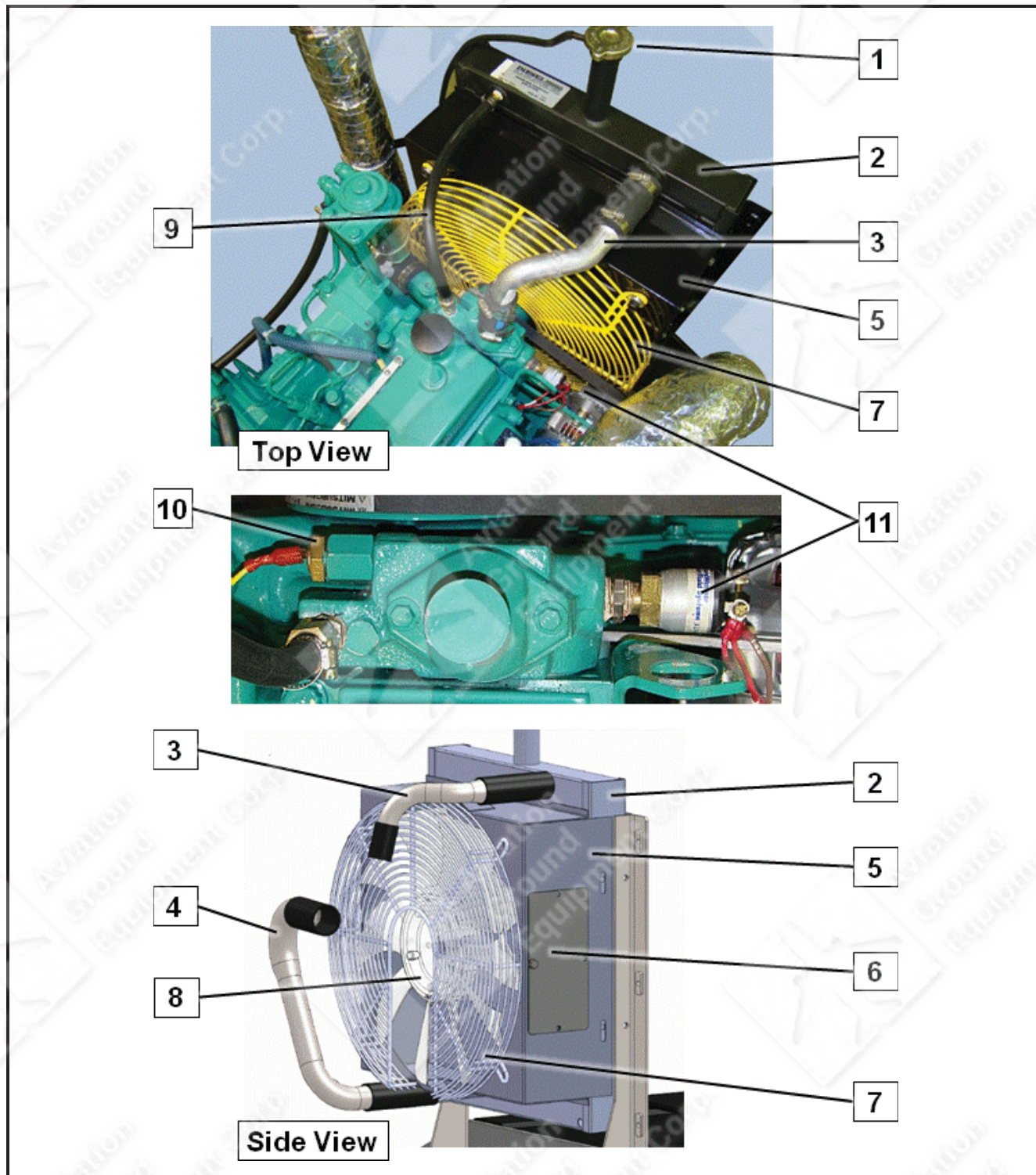


Figure 9: Cooling System Components

FIGURE – ITEM NO.	PART NO.	DESCRIPTION	EFF	QTY.
10 -	1	Radiator Cap, 7 lb. Pressure (included with radiator)		Ref.
	2	281423 Radiator		1
	3	291771 Pipe, Coolant, Top		1
		289200-003 Hose, Radiator, Straight, 1.25 ID		2.25"
		289200-004 Hose, Radiator, Straight, 1.50 ID		5"
	4	291778 Pipe, Coolant, Bottom		1
		289200-001 Hose, Radiator, Straight, 1.75 ID		2 x 5"
	5	291828 Shroud, Fan		1
	6	291097 Panel, Access		1
	7	291781 Guard, Fan		1
	8	291875 Fan, Radiator		1
	9	Line, De aeration		Ref.
		W7814-000 Bushing, Pipe, Steel		1
		402927-003 Connector, Male		2
		056534 Hose, 1/4" ID		21.5"
		W10869-014 Clamp, Hose, Ss		2
10		Sender, Water Temperature (A401 supplied with engine)		Ref.
11	403782-002	Switch, Water Temperature, SPDT, 210° (S402)		1

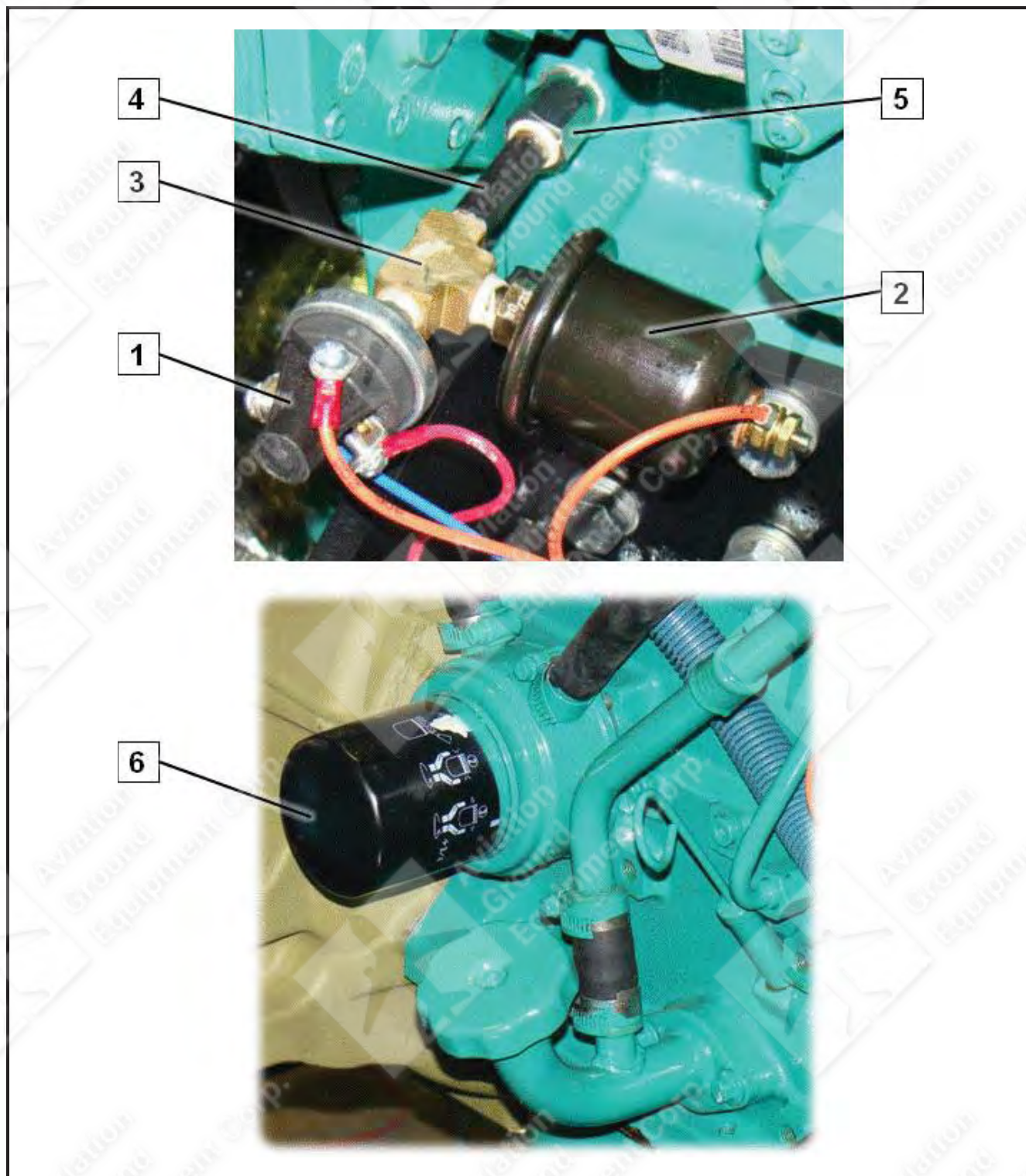


Figure 10: Lubrication System Components

FIGURE – ITEM NO.	PART NO.	DESCRIPTION	EFF	QTY.
11 -	1	403809-002	Switch, Oil Pressure (S403)	1
	2	78B1118-002	Sender, Oil Pressure (A402)	1
	3	W10910-000	Tee Fitting	1
	4	W10750-004	1/8" Pipe Nipple	1
	5	287419	Adapter, M10 to 1/8 NPT	1
	6	286897-037	Oil Filter (Fleetguard LF16001)	Ref.

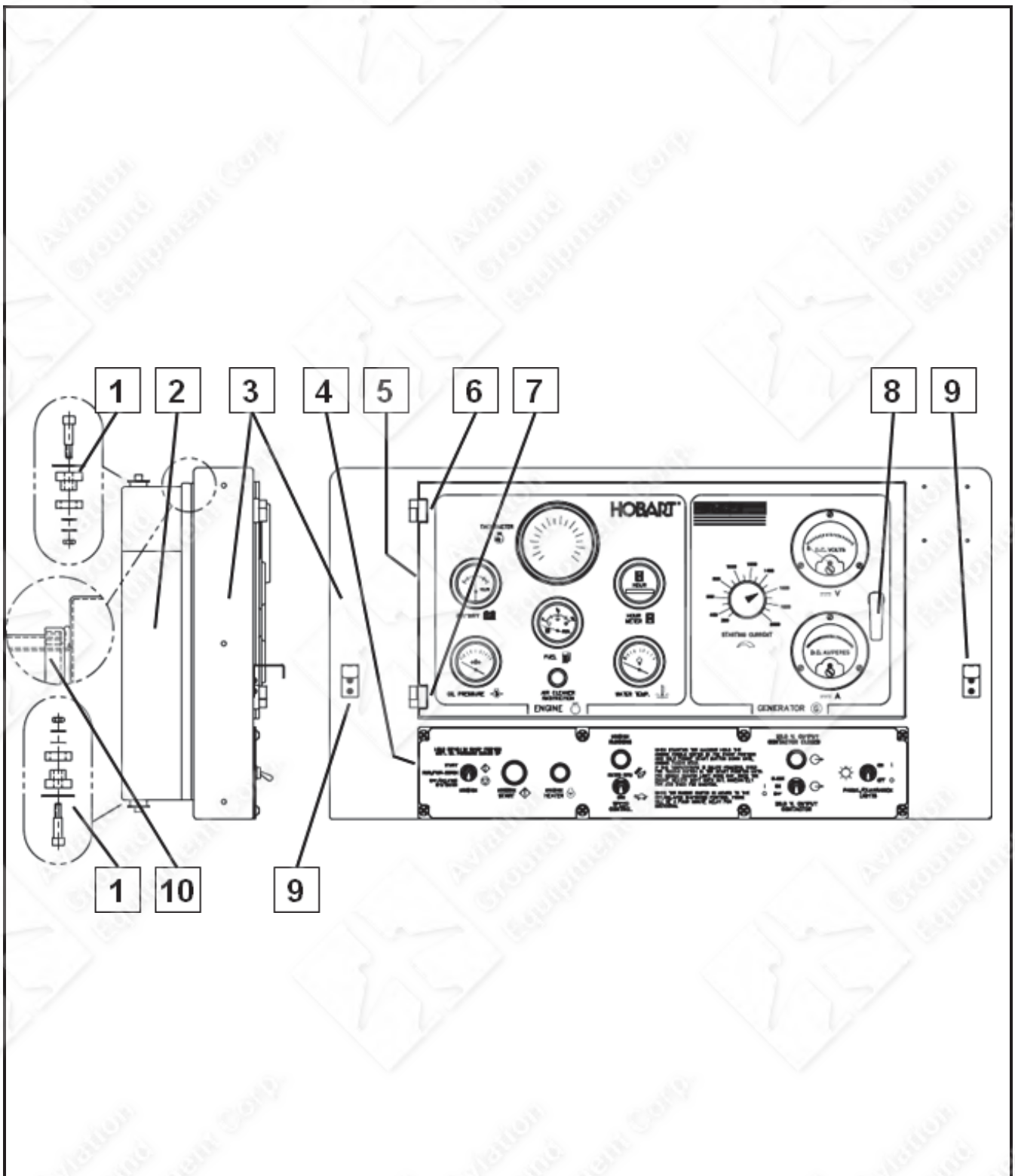


Figure 11: Control Box Mechanical Components

FIGURE – ITEM NO.	ITW GSE PART NO.	DESCRIPTION	EFF	QTY.
12 -	1	286388-001	Ring and Bushing Mount	4
		289104-001	...#10-24 Shoulder Screw	4
		286477-002	...Snubber Washer	4
		W11254-003	...#10 Brass Flat Washer	4
	2	291431	Control Box Mounting Panel	1
	3	291307	Control Box Housing	1
	4	290931	Switch Panel	1
		040213	Neoprene Door Gasket	4.1 ft.
	5	289092	Control Box Door	1
		291937	Control Box Label	1
		040201	Neoprene Switch Panel Gasket	5.3 ft.
	6	288836-002	Hinge, Offset, Miniature, Type B	1
	7	288836-001	Hinge, Offset, Miniature, Type A	1
	8	288999-001	Latch, Control Box	1
	9	288020	Cover Support Bracket	2
	10	286485-001	Sealing Gasket	124 In.

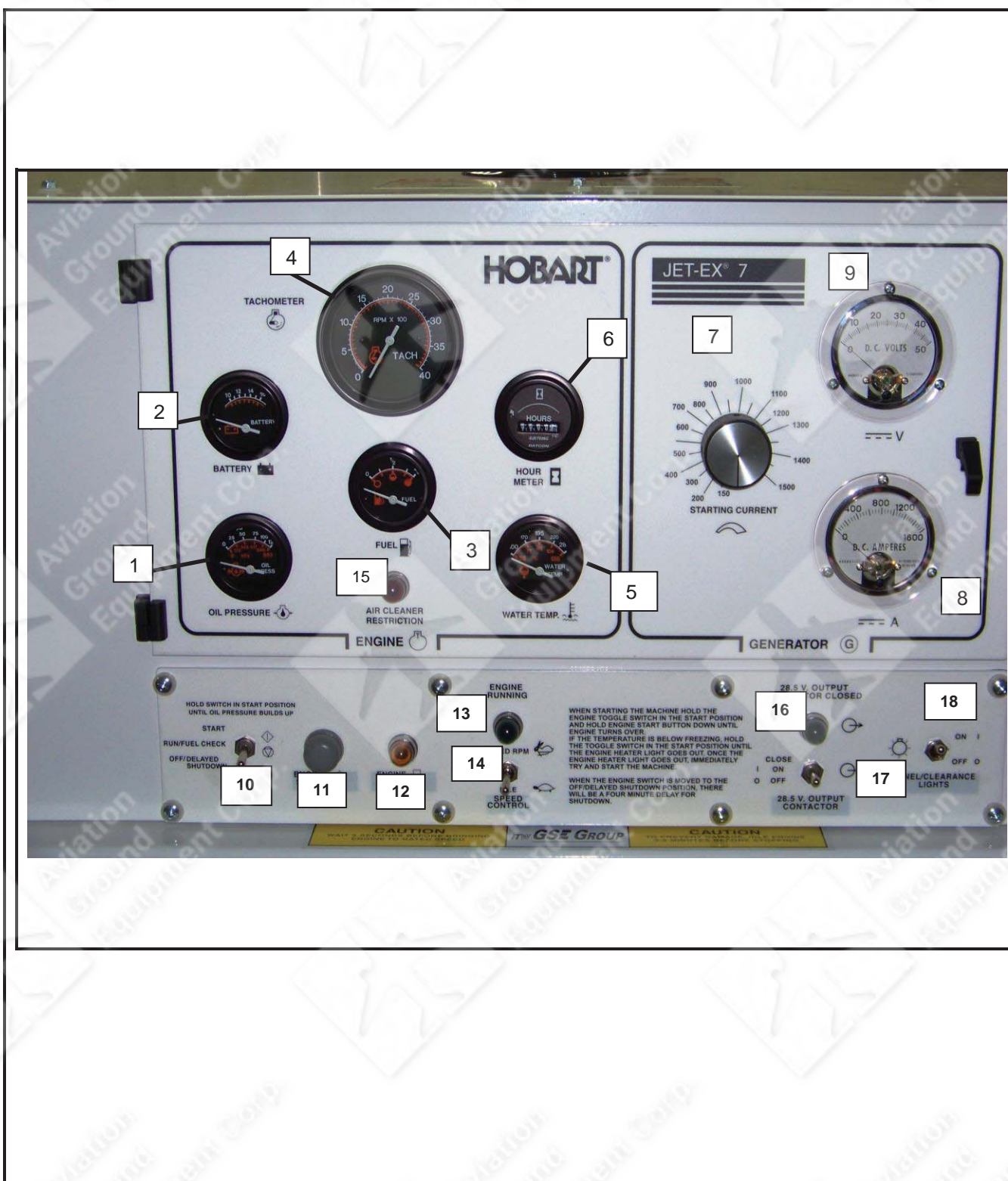


Figure 12: Control Box Controls and Indicators

FIGURE – ITEM NO.	ITW GSE PART NO.	DESCRIPTION	EFF	QTY.
13 -	1	78A1117-002	Oil Pressure Gauge	1
	2	286699-001	Battery Voltmeter	1
	3	494134-001	Fuel Gauge	1
	4	408596-001	Tachometer	1
	5	287908	Water Temperature Gauge	1
	6	78A1120-001	Hour Meter	1
	7	16DA2162	Rheostat Knob	1
		286607-001	Potentiometer, 10K, 2W, Linear	1
		402663	Lock Nut, Potentiometer	1
	8	400641-011	DC Ammeter, 0 – 1600 A scale, 50 mV	1
	9	400642-003	DC Voltmeter, 0 – 50 V scale	1
	10	403189	Switch, Toggle, 3 Position, 2 Pole (Start-Run-Off)	1
	11	30GH1119	Switch, Pushbutton (Engine Start)	1
	12	HF2518-005	Pilot Light Assembly, 12 V, Amber (Heater)	1
*		404173	...Light Base	1
*		404172-002	...Amber Lens	1
*		400613-004	...Bulb (Type 1815)	1
	13	HF2518-008	Pilot Light Assembly, 12 V, Green (Running)	1
*		404173	...Light Base	1
*		404172-003	...Green Lens	1
*		400613-004	...Bulb (Type 1815)	1
	14	290957	Switch, Toggle, 2 Position, 4 Pole (Speed)	1
	15	HF2518-002	Pilot Light Assembly, 12 V, Red (Air Restriction)	1
*		404173	...Light Base	1
*		404172-001	...Red Lens	1
*		400613-004	...Bulb (Type 1815)	1
	16	HF2518-008	Pilot Light Assembly, 28 V, Green (Contactor)	1
*		404173	...Light Base	1
*		404172-003	...Green Lens	1
*		400613-003	...Bulb (Type 757)	1
	17	403189	Switch, Toggle, 3 Position, 2 Pole (Contactor)	1
	18	290981	Switch, Toggle, 2 Position, 2 Pole (Lights)	1

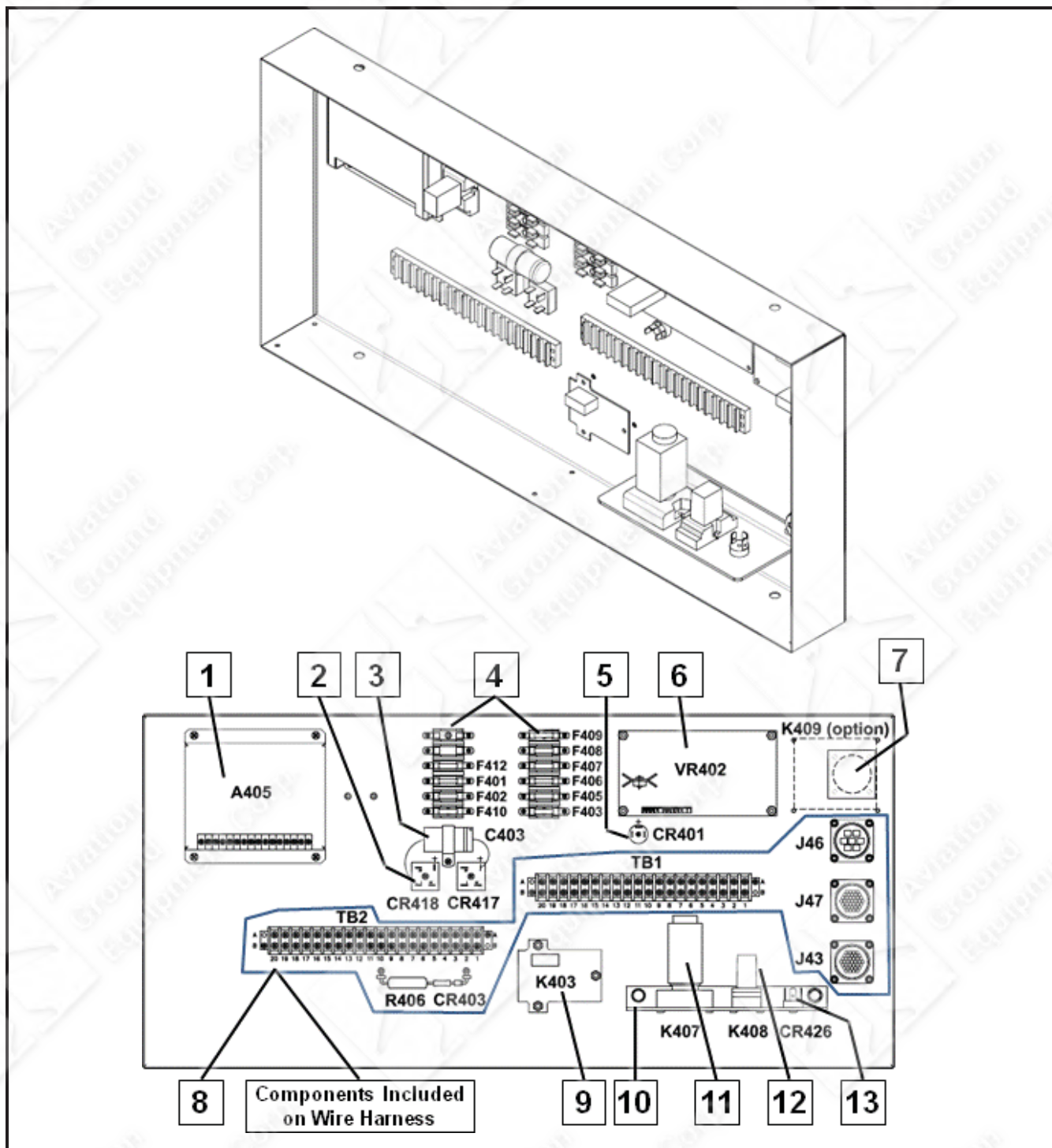


Figure 13: Control Box Interior Components

FIGURE – ITEM NO.	ITW GSE PART NO.	DESCRIPTION	EFF	QTY.
14 - *	1 291876	Speed Control Unit (A405)		1
	84A1075	Mount, Rubber		8
	2 404065-002	Rectifier, Bridge (CR417 & CR418)		2
	3 180593-003	Capacitor, 100 MFD, 350 VDC (C403)		1
	W10051-014	Clamp, Wire, Plastic		1
4	290958	Fuse Block, 6 Pole		2
	W11166-003	Fuse, 10 A (F401, F402, F403, F405, F406, F407, F408, F410)		8
	288019-004	Fuse, 20A, Slow Blow (F412)		2
	FU11183	Fuse, 30A, Slow Blow (F409)		
5	407948	Rectifier, Dual, Isolated Base, 600 V, 10A (CR401)		1
6	181022C-005	Board, PC, Voltage Regulator (VR402)		1
	84A1075	Mount, Rubber		8
7	286611	Label, Blank (covers option hole)		1
8	291901	Harness, Control Box		1
		The harness includes the following items:		
		...Terminal Block, 20-Position (TB1 & TB2)		2
		...Resistor , Axial Lead, 50 Ohm, 10 W (R406)		1
		...Diode, 150 PIV, 4 Amp (CR403)		1
		...Connector, Circular Plastic, 37-pin (J43 & J47)		2
		...Connector, Circular Plastic, 7-pin (J46)		1
9	181022C-005	Board, PC, Overvoltage (K403)		1
	84A1075	Mount, Rubber		3
10	290948	Support, Relays		1
11	290927	Relay, Timer, 12 VDC, 2-Pole (K407)		1
12	78B1138	Socket, Relay, 11 Pin		1
	79B1140	Relay, 12 VDC, 4-Pole, (K408)		1
13	408352	Socket, Relay		1
	407948	Rectifier, Dual, Isolated Base, 600 V, 10A (CR426)		1

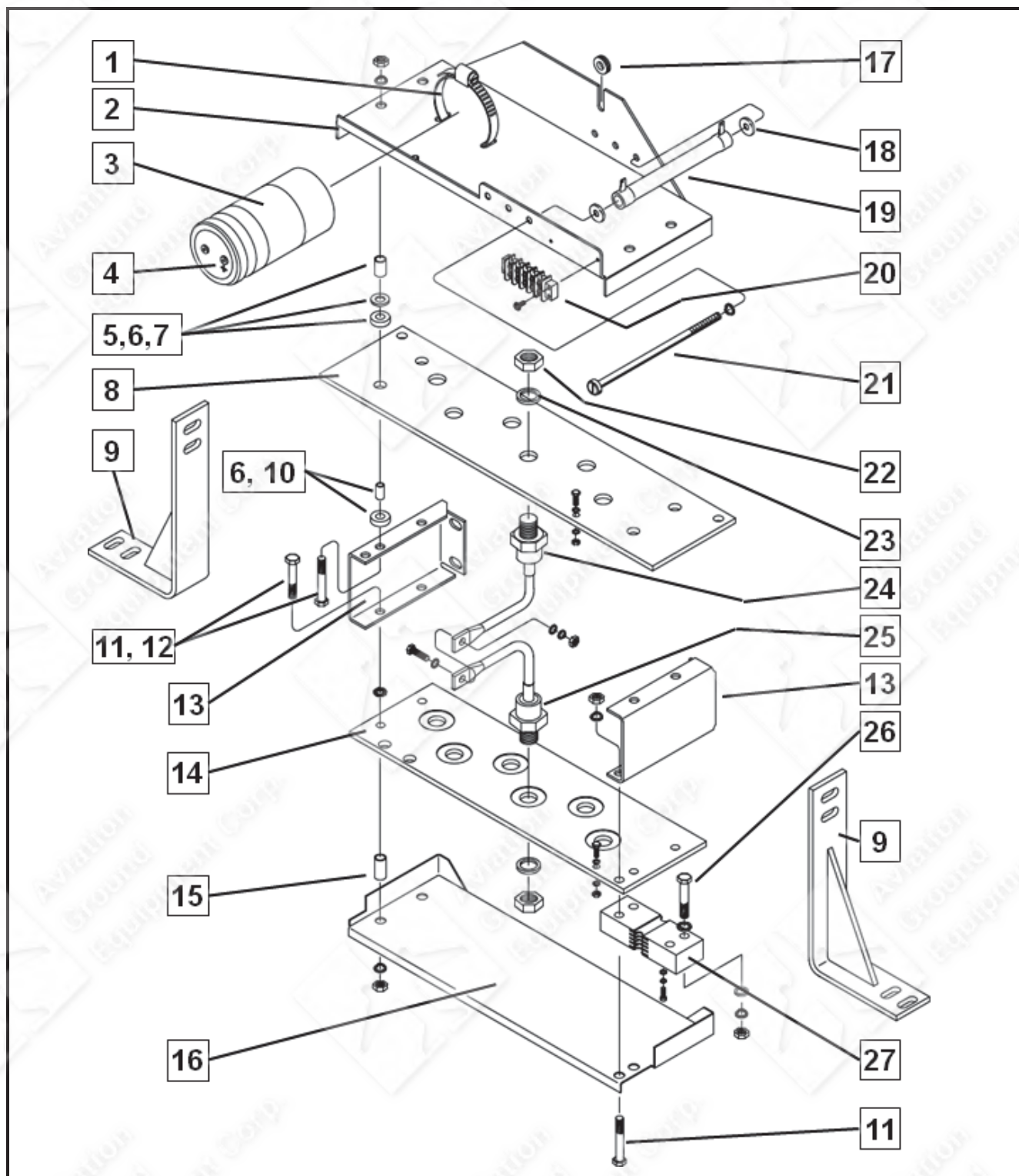


Figure 14: Rectifier Components

FIGURE – ITEM NO.	PART NO.	DESCRIPTION	EFF	QTY.
15 -	291996	Rectifier Assy		Ref.
1	W10869-006	Capacitor Clamp		1
2	286887	Shroud, Air, Top, Rectifier		1
3	287184-003	Insulator, Capacitor		1
4	405278-006	Capacitor, 90000 MFD, 75		1
5	A25	Insulating Washer		8
6	W11242-018	Washer, Flat, 3/8"		8
7	283063	Rectifier Spacer		8
8	286813	Heat Sink, Rectifier, Positive		1
9	288008	Rectifier Mounting Bracket		2
10	AW626	Bushing, Insulating		4
11	W11097-007	Screw , 3/8-16 x 2 inches Lg.		5
12	W11097-022	Screw , 3/8-16 x 2-1/2 inches Lg.		4
13	292081	Heat Sink Bracket		2
14	282239	Heat Sink, Rectifier, Negative		1
15	180600	Shroud Spacer		3
16	285647	Shroud, Air, Bottom, Rectifier		1
17	402037-004	Rubber Grommet (V02231)		1
18	16DA3493	Insulating Washer		6
19	288380-001	Resistor, 10 OHM, 100 WATT		3
20	401911-005	5 Station Terminal Block (V6S553)		1
21	W11114-012	Screw, 1/4-20 X 7-1/4 inches Lg.		3
22	W11280-015	Nut, Jam, Hex, 3/4-16		12
23	494681-001	Spring Washer		12
24	W10931-003	Rectifier, Positive Base, 1N4049, 275 A, 300 PRV		6
25	W10933-003	Rectifier, Positive Base, 1N4049R, 275 A, 300 PRV		6
26	W11097-007	Screw, HHC, 3/8-16 x 2 inches Lg.		1
27	180068	Shunt, 1600 A, 50 mV		1
*	28	288015	Wire Harness, Rectifier	1
*	29	291358	Splice, Solder	3

FIGURE – ITEM NO.	PART NO.	DESCRIPTION	EFF	QTY.
16 -	1	W9218-227	Cable, Negative Output	1
	2	400435	Label, 28 Volts	1
	3	A25	Insulating Washer	2
	4	AW626	Insulating Bushing	1
	5	286849	Contactor Insulator	1
	6	286810-001	Contactor, DC, 800 A	1
	7	W9218-251	Cable, Positive Output	1
*	8	489658-010	Diode Assembly	1

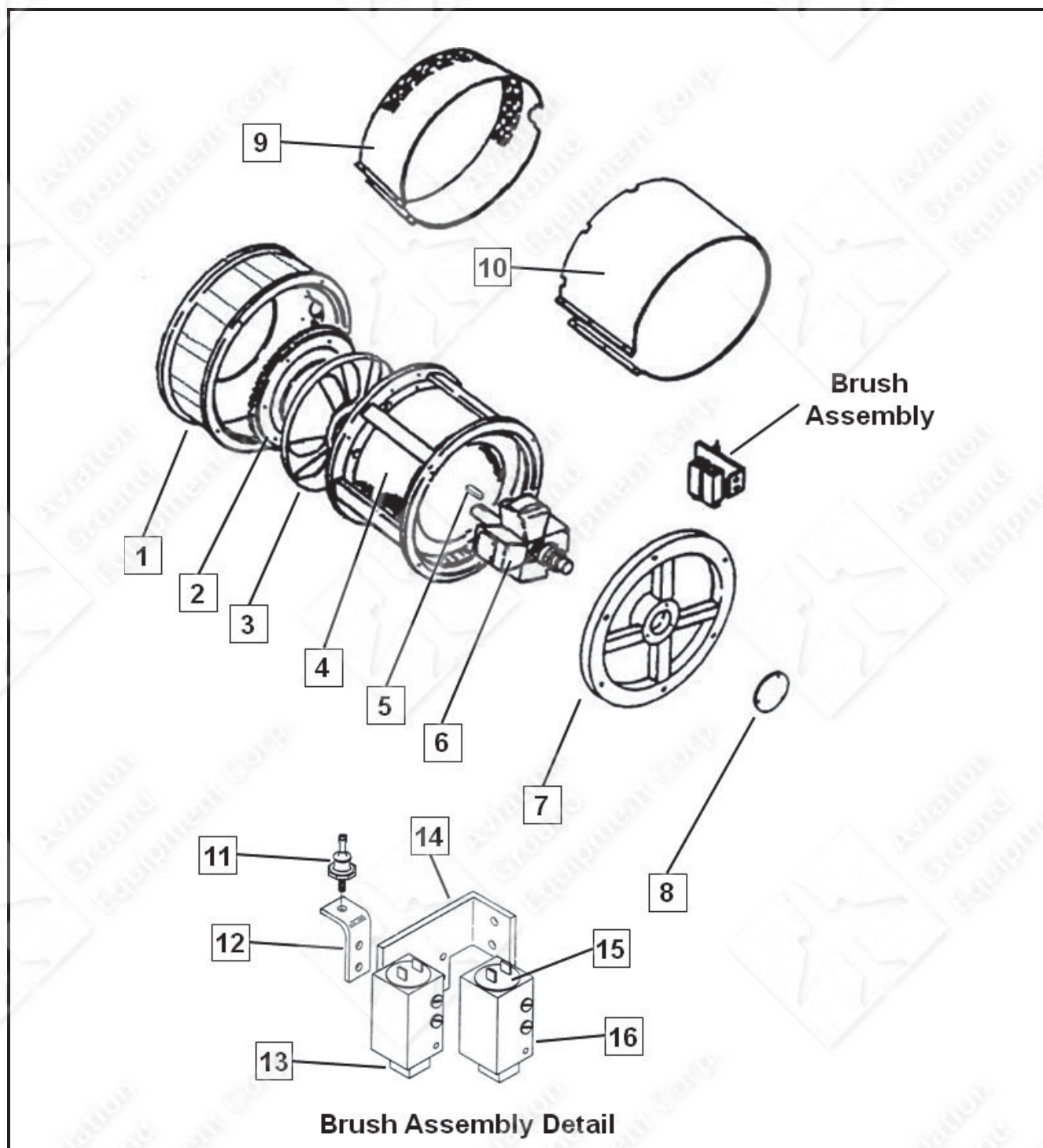


Figure 16: Generator Assembly

FIGURE – ITEM NO.	PART NO.	DESCRIPTION	EFF	QTY.
17 -	288985	Generator Assembly		1
1	287564	Fan Housing		1
2		Flywheel (supplied with engine)		Ref.
3	290646	Fan and Coupling Assembly		1
*	402789-004	...Screw, Cap, 3/8 – 24 x 3/4 inch Nylok		6
*	W11254-005	...Washer, Lock, Std., 3/8 inch		6
*	85C1004-002	...Spit Taper Bushing		1
4	488557-008	Housing & Stator Assembly		1
5	489135	Coupling Key		1
6	Z180776	Armature		1
7	488555-001	Housing, Bearing Assembly		1
8	287401	Bearing Cap		1
9	288003	Flywheel Housing Cover		1
10	281688	Generator Housing Cover		1
11	408999-001	Diode, Silicon, 30 A, MR1396, Positive Assembly		1
12	488628	Bracket, Diode		1
13	402788	Brush		2
14	488562	Bracket, Brush Holder		1
15	402531	Cap		2
16	402530	Guide		2
*	17 W10072-063	Bearing		1
*	18 287956	Bracket, Rear Generator Support		1

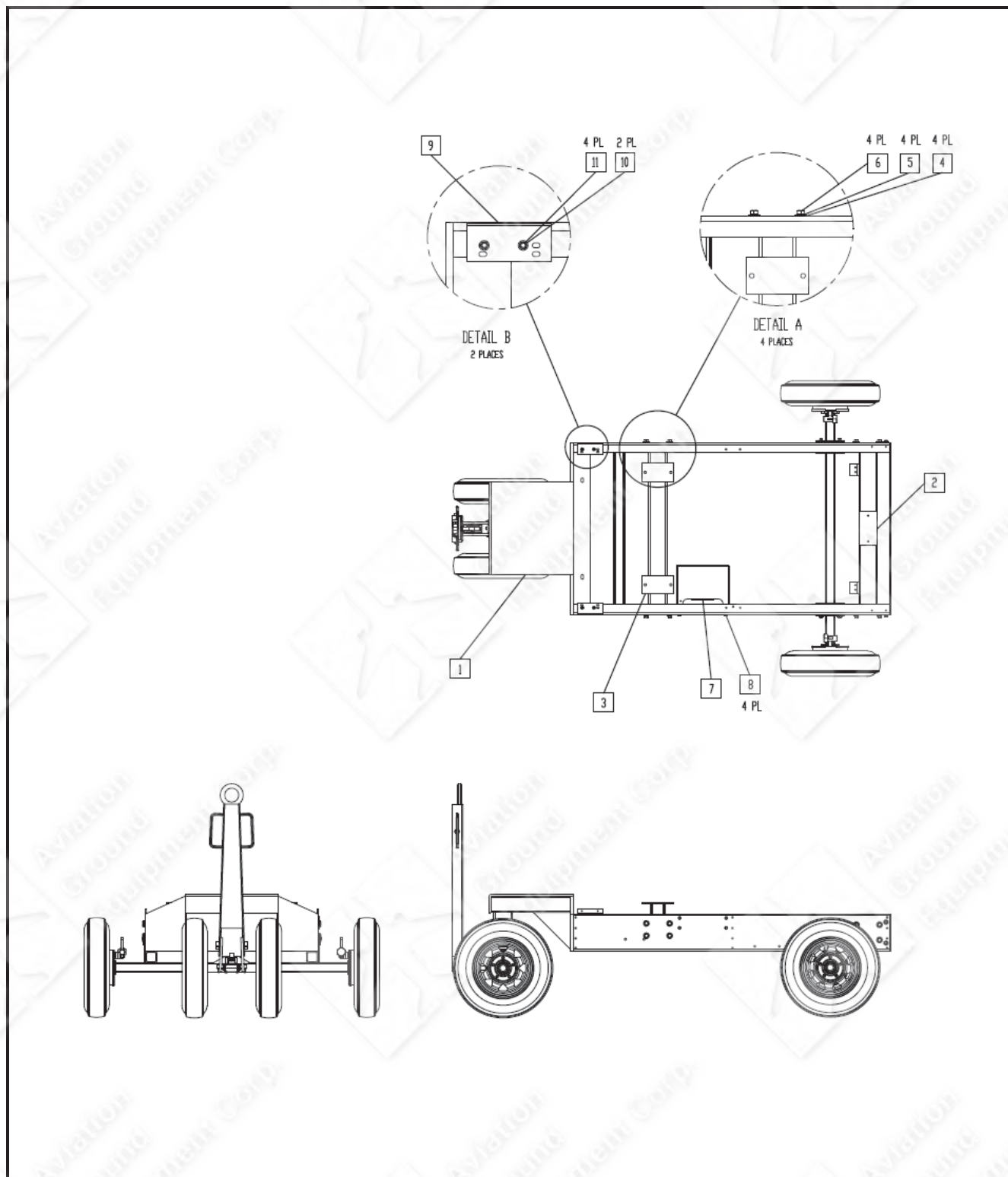


Figure 17: Trailer Components

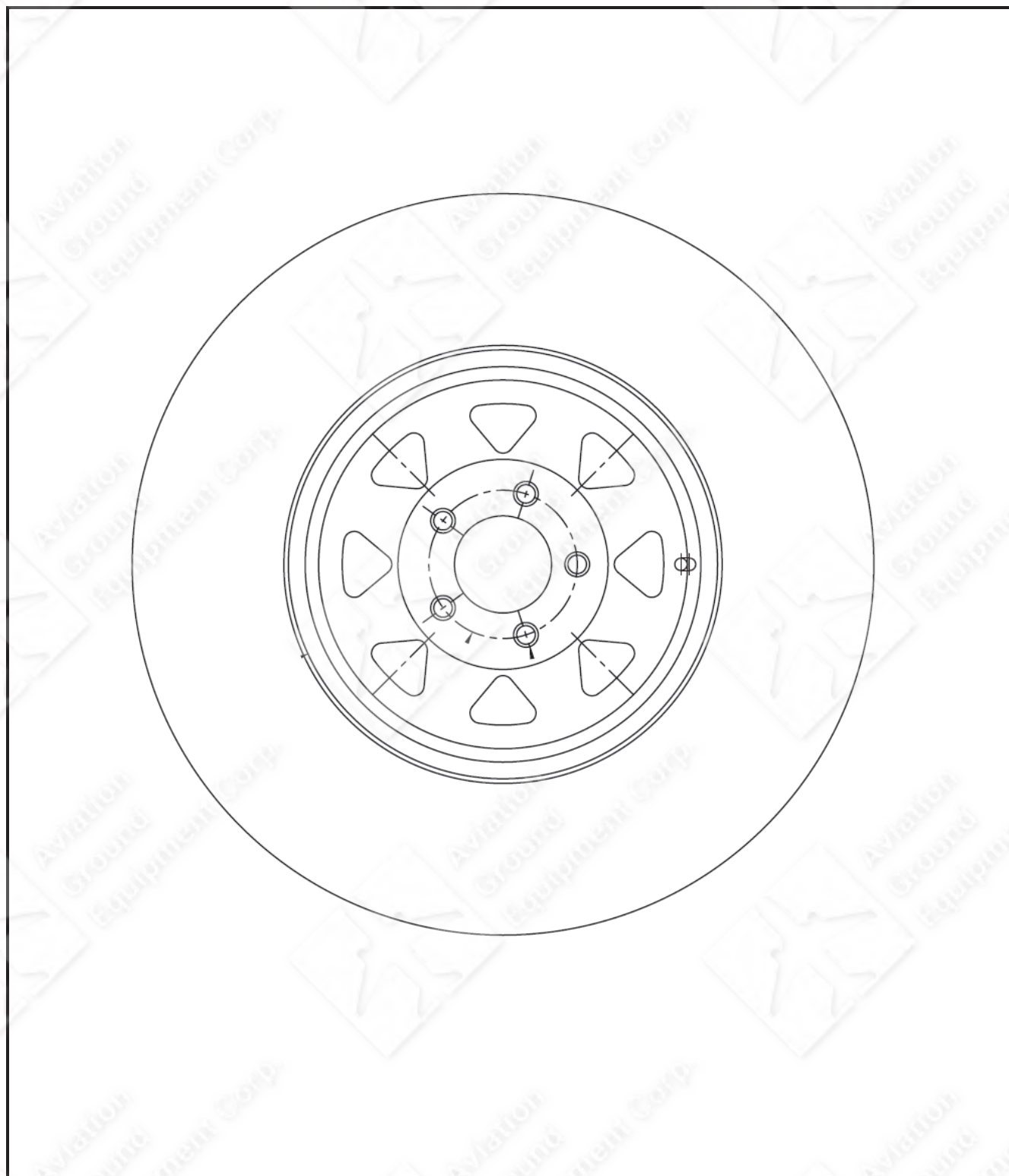


Figure 18: Wheel and Tire Assembly

FIGURE – ITEM NO.	PART NO.	DESCRIPTION	EFF	QTY.
19 - 1	282720	Wheel and Tire Assembly		4.